



# VCU CatchManagement

Onboard weighing and registration

To read this brochure in other languages visit: [www.vcu.nl/nl/brochure-vcu-catchmanagement](http://www.vcu.nl/nl/brochure-vcu-catchmanagement)



The Maritime Specialist

VCU TCD B.V.

Keteldiep 9  
8321 MH Urk  
T: +31(0)527 68 62 80  
[tcd@vcu.nl](mailto:tcd@vcu.nl)

## Other VCU Companies

### Main Office

Vlietstroom 18  
8321 EG Urk  
T: +31(0)527 68 35 35  
[info@vcu.nl](mailto:info@vcu.nl)

### VCU Maritime B.V.

Vlietstroom 18  
8321 EG Urk  
T: +31(0)527 68 37 86  
[maritime@vcu.nl](mailto:maritime@vcu.nl)

### VCU Oil B.V.

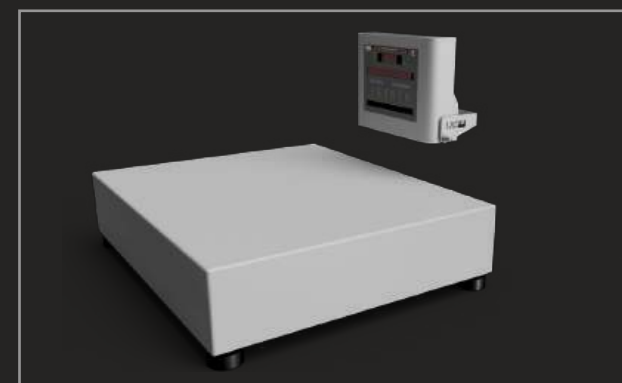
Vlietstroom 18  
8321 EG Urk  
T: +31(0)527 68 52 49  
[oil@vcu.nl](mailto:oil@vcu.nl)

### VCU Store B.V.

Vlietstroom 18  
8321 EG Urk  
T: +31(0)527 68 45 45  
[store@vcu.nl](mailto:store@vcu.nl)

### VCU Safetycentre B.V.

Vlietstroom 10  
8321 EG Urk  
T: +31(0)527 68 81 25  
[safetycentre@vcu.nl](mailto:safetycentre@vcu.nl)



The Maritime Specialist

[www.vcu.nl](http://www.vcu.nl)



VCU CatchManagement is the result of development and close cooperation with fishermen. The system is a rugged, durable, user-friendly and intuitive weighing system; intended for weighing, recording and reporting catches

of fresh fish. The system is available in several languages and can be expanded with any language.

- ▶ Marine Scale
- ▶ Touchscreen interface
- ▶ Label Printer
- ▶ Weighing Server
- ▶ VCU CatchManagement Software

## Technical data

Platform	600 x 500	550 x 400	400 x 300
Platform dimensions	600 x 500 mm	550 x 400 mm	400 x 300
	23.6 x 19.7 in	21.6 x 15.7 in	15.7 x 11.7 in
Weighing range			
0-30 kg / from 20 g	✓	✓	✓
30-60 kg / from 50 g	✓	✓	
60-120 kg / 100 g	✓		
Specifications			
Material	AISI-316L	AISI-316L	AISI-316L
Integrated with touchscreen	optional	✓	optional
Stand-alone	optional	optional	✓
Indicator mounting and powering			
Wall mounting	✓	✓	✓
230V ~clean mains	✓	✓	✓



## VCU CM Pro Marine Scale

VCU has developed its own motion and gravity compensated weighing scale that seamlessly integrates with the other components of the VCU CatchManagement system.

- ▶ Rugged and simple design
- ▶ Executed in AISI-316L stainless steel

The features in which the VCU CM Pro Marine Scale distinguishes itself from other scales are:

- ▶ Can be adjusted and certified up to a resolution of 20 grams (till 50 kg).
- ▶ Can be adjusted with 5 times more accuracy compared to other scales on the market.
- ▶ Available in 3 sizes:
  - ▶ 600 x 500 up to 120 kg
  - ▶ 550 x 400 up to 60 kg
  - ▶ 400 x 300 up to 30 kg
- ▶ Fully integrated with the VCU Touchscreen

## VCU CatchManagement

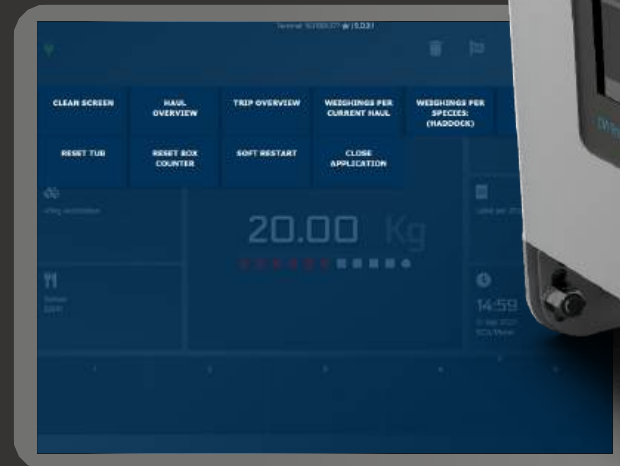
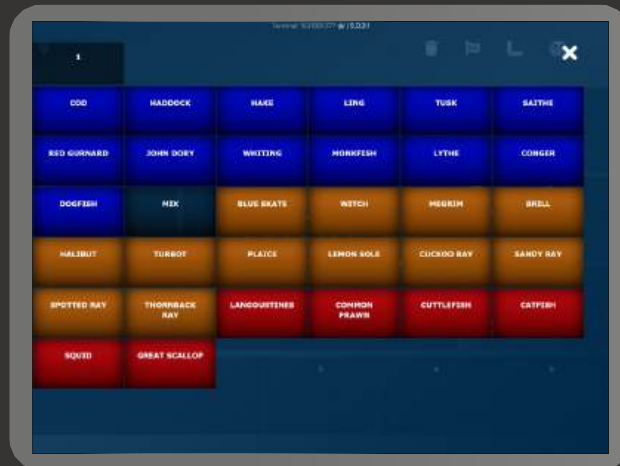
- User-friendly
- Flexible
- Accurate
- Intuitive
- Rugged



## VCU CM Pro Terminal

The VCU CM Pro Terminal is an industrial touchscreen with integrated VCU CatchManagement interface, specially developed for weighing and recording purposes in the food processing industry.

- ▶ Made entirely of AISI-316L stainless steel
- ▶ Withstands harsh conditions on board
- ▶ IP67 compliant
- ▶ Suitable for operating temperatures from -10° to +40° Celsius
- ▶ Interface can be displayed in multiple languages



## VCU CM Pro Label Printer

The strength of the VCU Label Printer; is that it consists of an inexpensive desktop printer. The chosen printer is used worldwide for various applications. Installed in the rugged stainless steel VCU CM Pro housing, this is a rock-solid combination.

- ▶ Well-protected and conditioned
- ▶ Durable, rugged
- ▶ User-friendly
- ▶ Reliable
- ▶ Suitable for cold, wet and salty environments

Changing te labels has never been easier. After opening the door, the printer can pulled out entirely on the sliding installation tray and accessed with ease.



## VCU CM Pro Interface

- Unlimited possibilities in terms of •
- overview configurations
- Multilingual •
- Easy to use •
- Self-learning system •
- Remote support •
- Full traceability •



## VCU CM Pro Software

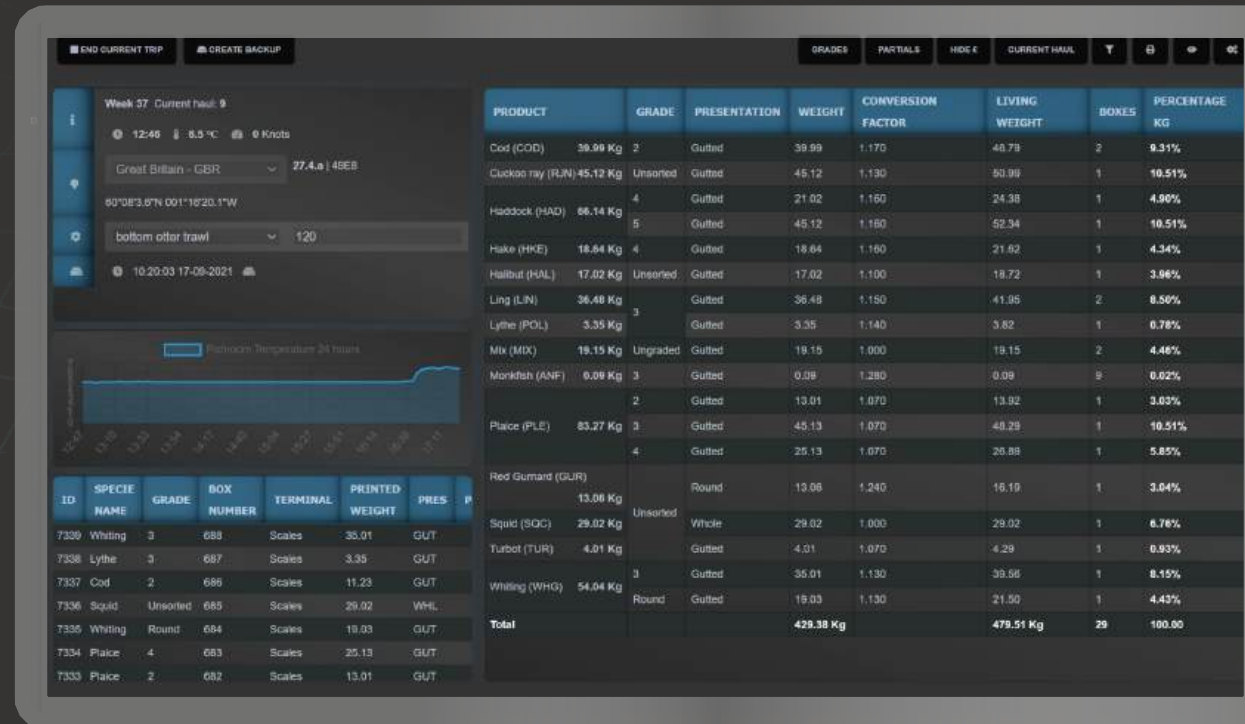
The CatchManagement software was developed in-house by VCU and can be divided into an operator side and an administrator side.

The operator side is in the fishhold. With the weighing software, an unlimited number of species screens and overviews can be generated.

- ▶ Fish species can be distinguished by colour for sorting purposes
  - ▶ Fish species
  - ▶ Fishery type
  - ▶ Trader or fish company
- ▶ A specific sorting arrangement can be made for each type of fish.
- ▶ Continuous recording of temperature in the fishhold

## Unique VCU CatchManagement features:

- ▶ Multilingual system; interface in the bridge and fishhold can each set to their own language. A separate language can also be selected for print labels independently of the interface languages.
- ▶ Self-learning system based on saved preferences
- ▶ Visual and numerical tracking of skip status
- ▶ Simple cumulative tracking of remnants during the fishing trip per haul
- ▶ Before finishing the fishing trip the remaining remnants can be finished off fully automatically



From the administrator dashboard in the bridge, all important overviews and actions can be called up and viewed from one screen.

For example, an overview per time frame can be presented as:

- ▶ per haul
- ▶ per day
- ▶ per fishing trip

The overviews can be divided into the different species of fish which can, in turn, be divided into different variants such as:

- ▶ Whole
- ▶ Gutted
- ▶ Claws etc.

In addition, the software supports the e-hold for fishhold box arrangement.

There is also the possibility of providing the data to other systems and platforms.

## Service & support

With the help of remote access, VCU can provide service and support at any time (using the Internet connection on the ship), regardless of where the ship is located.

In addition, VCU is continuously working on expanding their dealer network in order to be able to guarantee good service on site.

